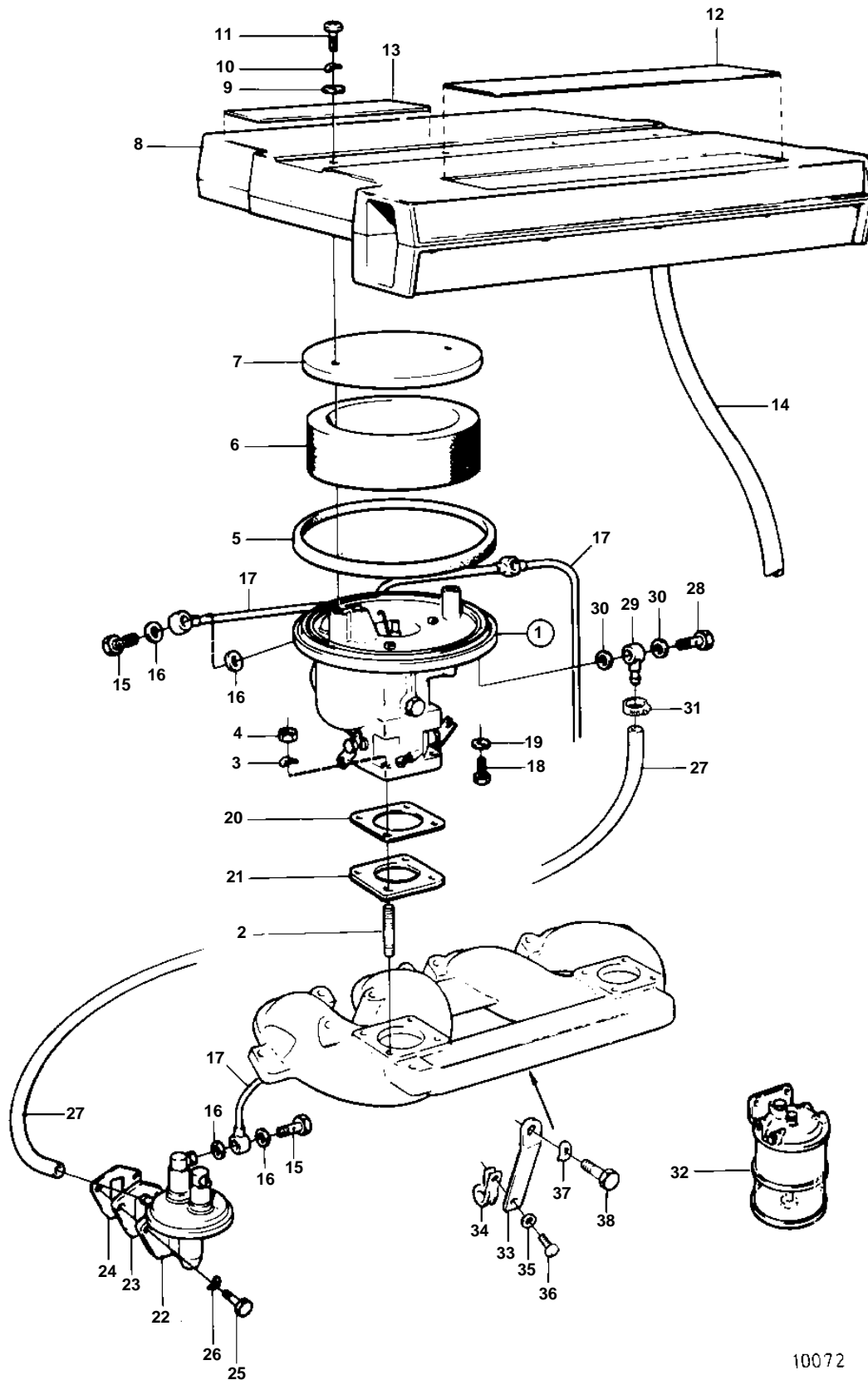


250A,250B



10072

250A,250B

| REF | PART NO. | QTY | DESCRIPTION | SEE SEC. | NOTES |
|-----|----------|-----|---------------|----------|--------------|
| 1 | 856123 | 2 | Carburetor | | |
| | | | | 02C-0915 | |
| 2 | 953044 | 8 | Screw | | |
| 3 | 941907 | 8 | Spring washer | | |
| 4 | 947941 | 8 | Nut | | |
| 5 | 831239 | 2 | Gasket | IK | |
| 6 | 824663 | 2 | Flame trap | | |
| 7 | 824699 | 2 | Cover | | |
| 8 | 841701 | 1 | Muffler | | |
| 9 | 192287 | 4 | Washer | | |
| 10 | 941906 | 4 | Spring washer | | |
| 11 | 974676 | 4 | Screw | | (968869) |
| 12 | | 1 | DECAL | | |
| 13 | 856687 | 1 | Decal | | |
| 14 | 948553 | X | Hose | | SEE GROUP 2A |
| 15 | 824711 | 2 | Hollow screw | | |
| 16 | 834452 | 4 | Gasket | IK | |
| 17 | 856356 | 1 | Fuel pipe | | |
| 18 | 947107 | 1 | Flange screw | | (968882) |
| 19 | 957171 | 1 | Gasket | | |
| 20 | 824677 | 2 | Gasket | | |
| 21 | 856297 | 2 | Flange | | |
| 22 | 841161 | 1 | Fuel pump | | |
| | | X | · COMPONENTS. | | |
| 23 | 463391 | 1 | Spacer | | |
| 24 | 3501530 | 2 | Gasket | IK | |
| 25 | 975099 | 2 | Screw | | (959224) |
| 26 | 941907 | 2 | Spring washer | | |
| 27 | 941149 | X | Plastic hose | | L = 400 MM |
| 28 | 942003 | 1 | Hollow screw | | |
| 29 | 855054 | 1 | Nipple | | |
| 30 | 957171 | 2 | Gasket | | |
| 31 | 947331 | 1 | Hose clamp | | |
| 32 | | 1 | FUEL FILTER | | SEE GROUP 9 |
| 33 | 841919 | 1 | Bracket | | |
| 34 | 952623 | 1 | Clamp | | |
| 35 | 940090 | 1 | Washer | | |
| 36 | 190665 | 1 | Screw | | |
| 37 | 941906 | 1 | Spring washer | | SEE GROUP 2B |
| 38 | 965216 | 1 | Screw | | SEE GROUP 2B |